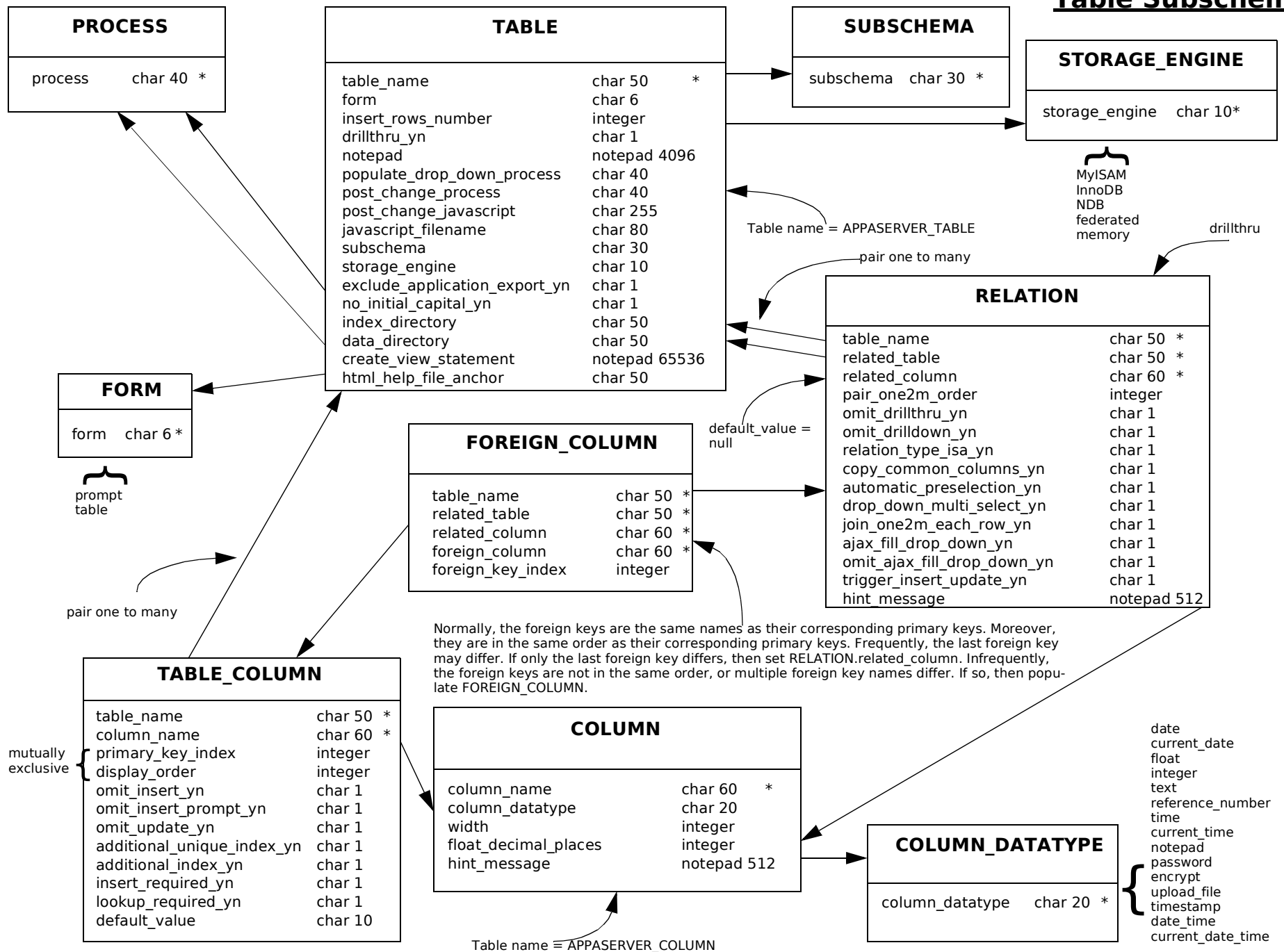


# APPASERVER Natural Database Schema

## Table Subschema



# APPASERVER Natural Database Schema

## Application Subschema

UPGRADE_SCRIPT	
appaserver_version	char 10 *
upgrade_script	char 80 *

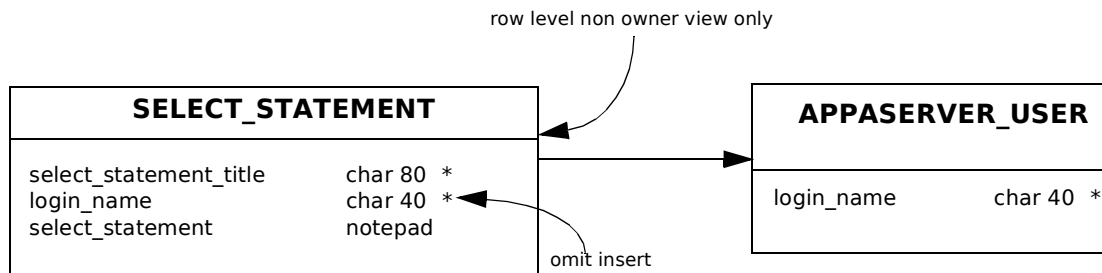
APPLICATION_CONSTANT	
application_constant	char 80 *
application_constant_value	char 255

DATE_FORMAT	
date_format	char 15 *

international } YYYY-MM-DD  
 american } MM/DD/YYYY  
 military } DD-MON-YYYY

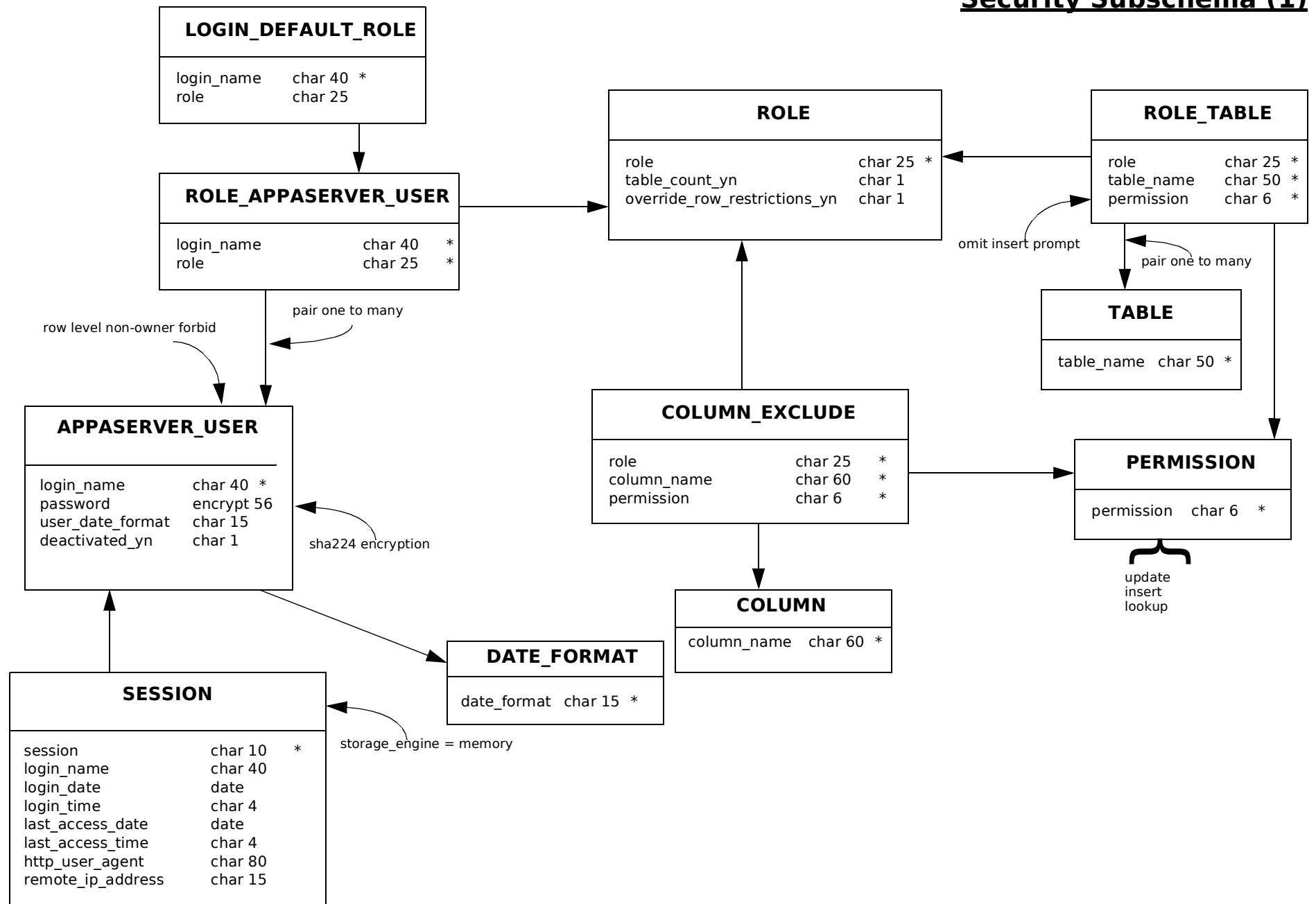
APPLICATION	
application	char 30*
application_title	char 30
user_date_format	char 15
relative_source_directory	char 255
next_session_number	integer
next_reference_number	integer
background_color	char 7
grace_home_directory	char 50
grace_execution_directory	char 50
menu_horizontal_yn	char 1
ssl_support_yn	char 1
max_query_rows_for_drop_downs	integer
max_drop_down_size	integer

Table name = APPASERVER\_APPLICATION



# APPASERVER Natural Database Schema

## Security Subschema (1)

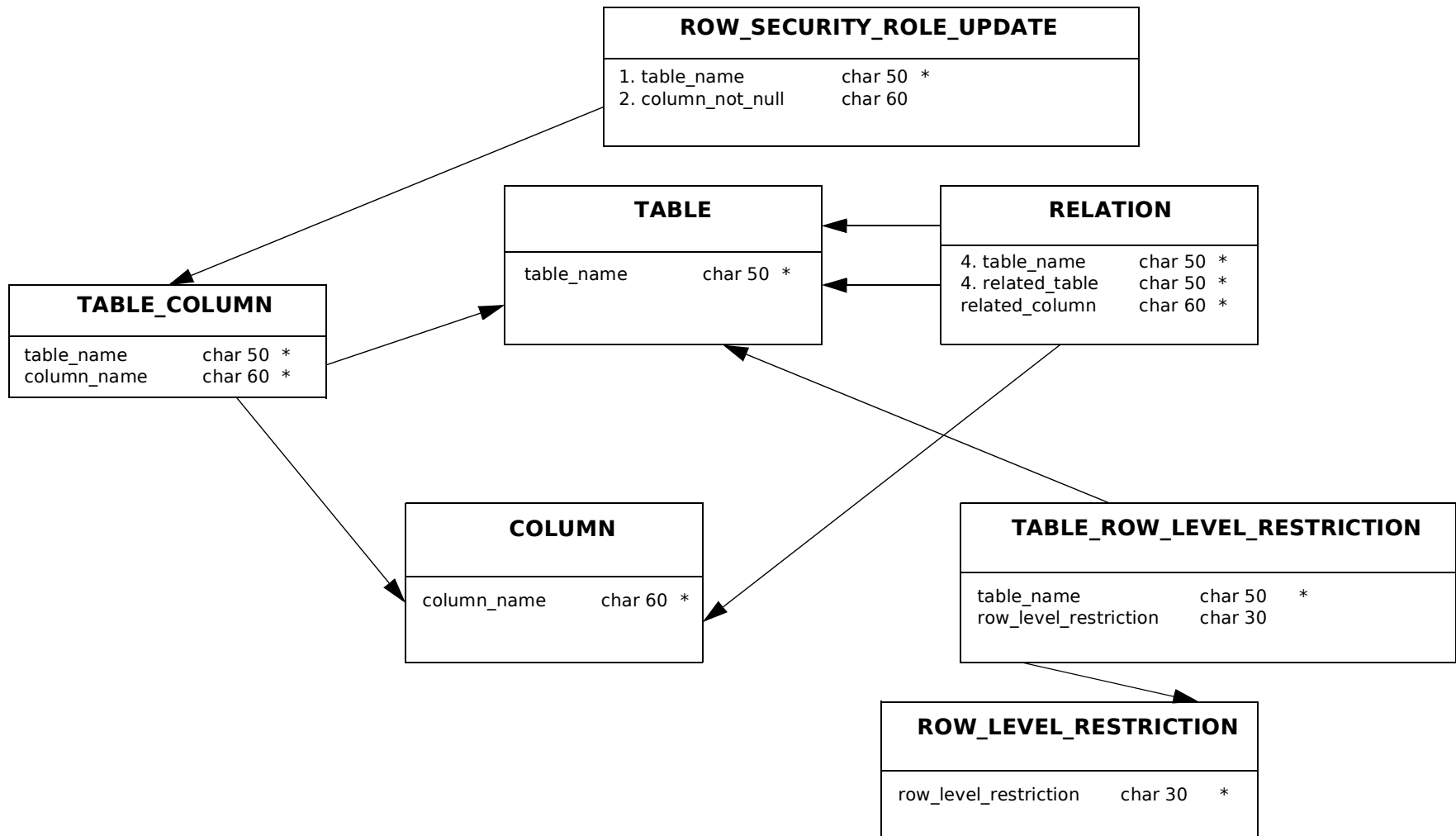


# APPASERVER Natural Database Schema

## Security Subschema (2)

1. For every row in a participating table ...
2. If column\_not\_null is not null, then ...
3. Only allow ROLE.override\_row\_restrictions\_yn update permissions. All other roles get view-only.
4. View-only permissions also for all rows in recursive 1:m related tables.

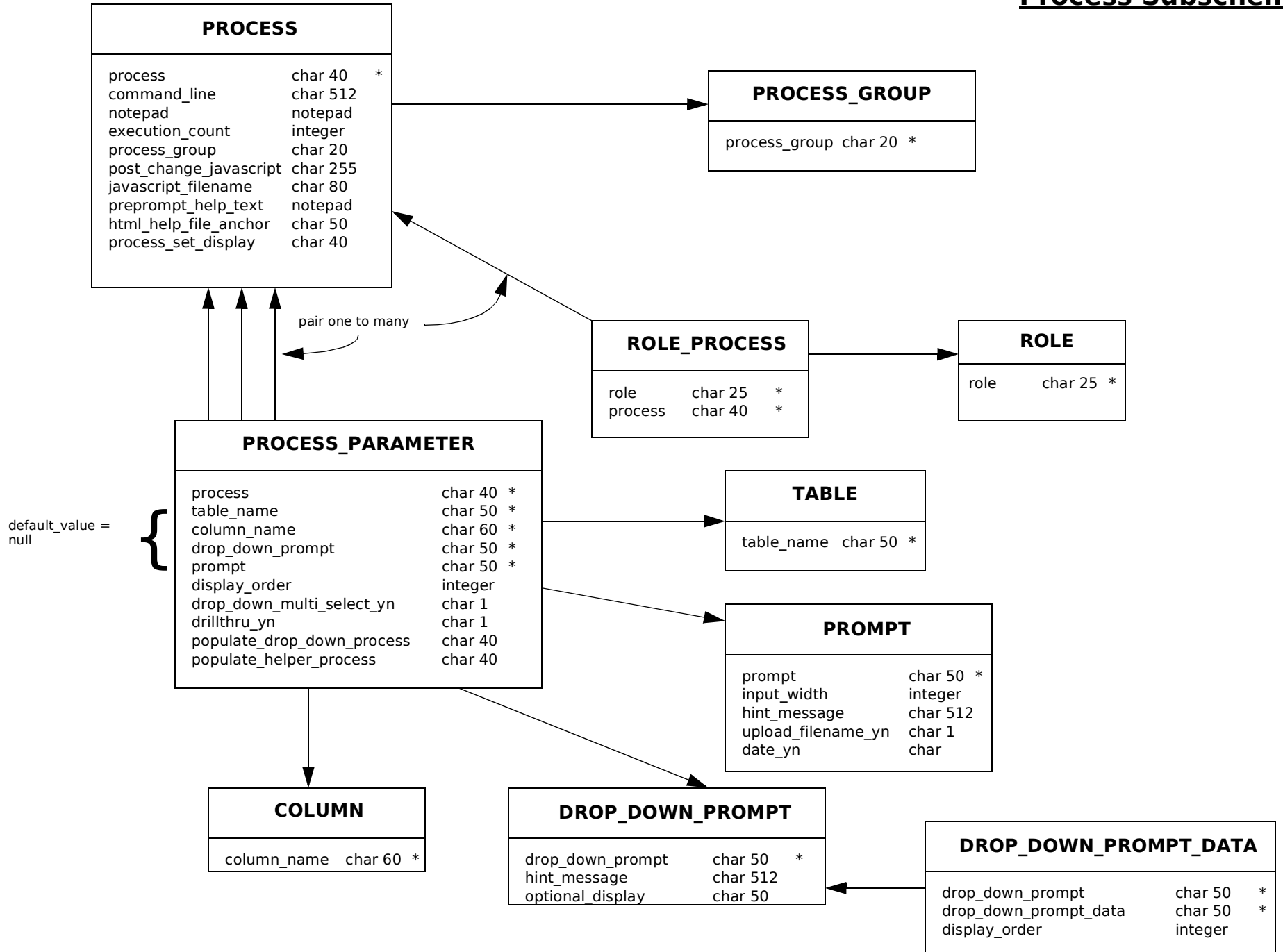
See hydrology: MEASUREMENT <-- MEASUREMENT\_BACKUP.



row\_level\_non\_owner\_view\_only  
row\_level\_non\_owner\_forbid

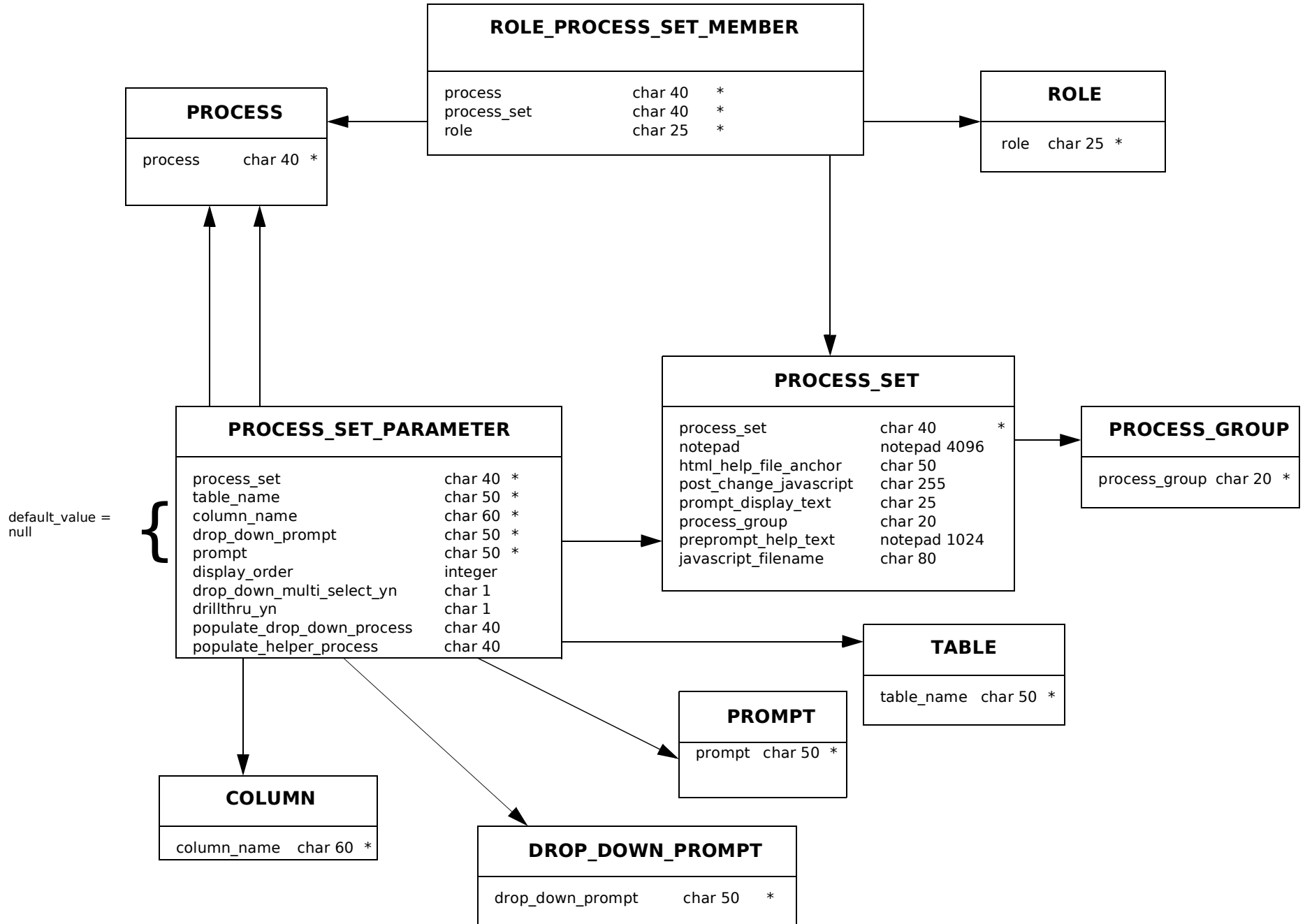
# APPASERVER Natural Database Schema

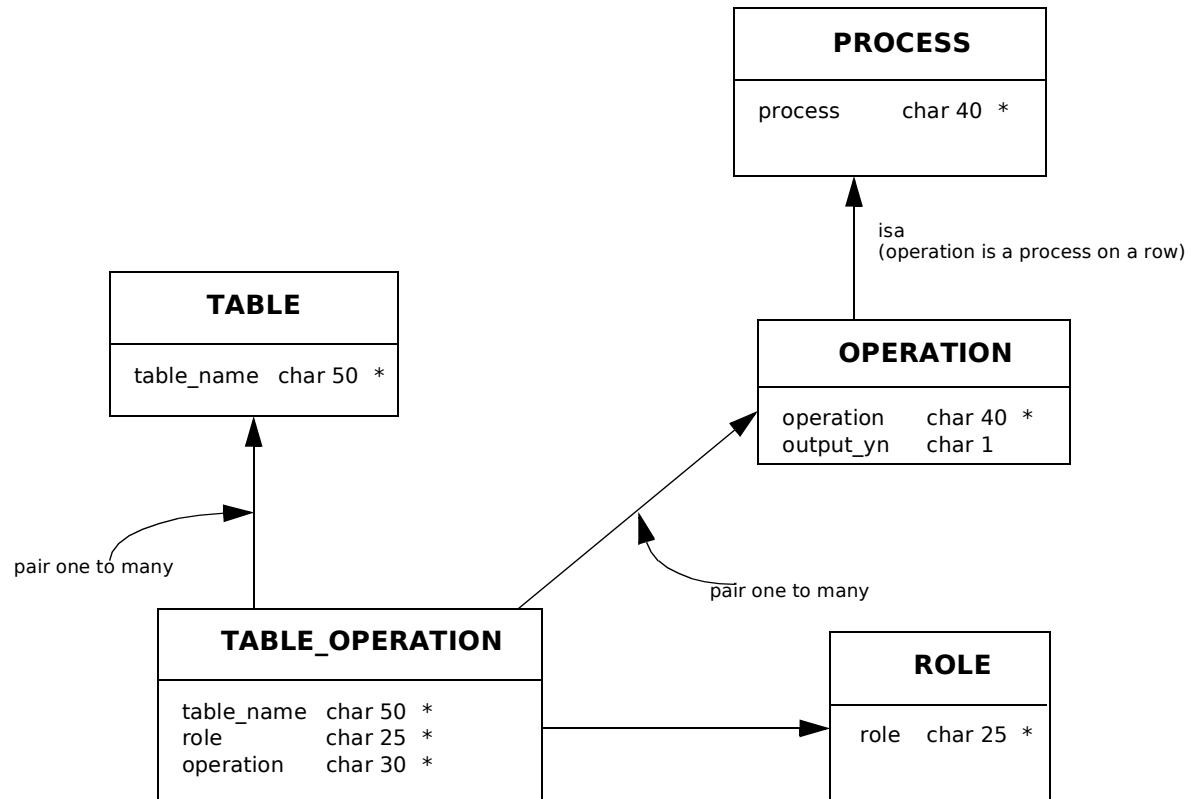
## Process Subschema



# APPASERVER Natural Database Schema

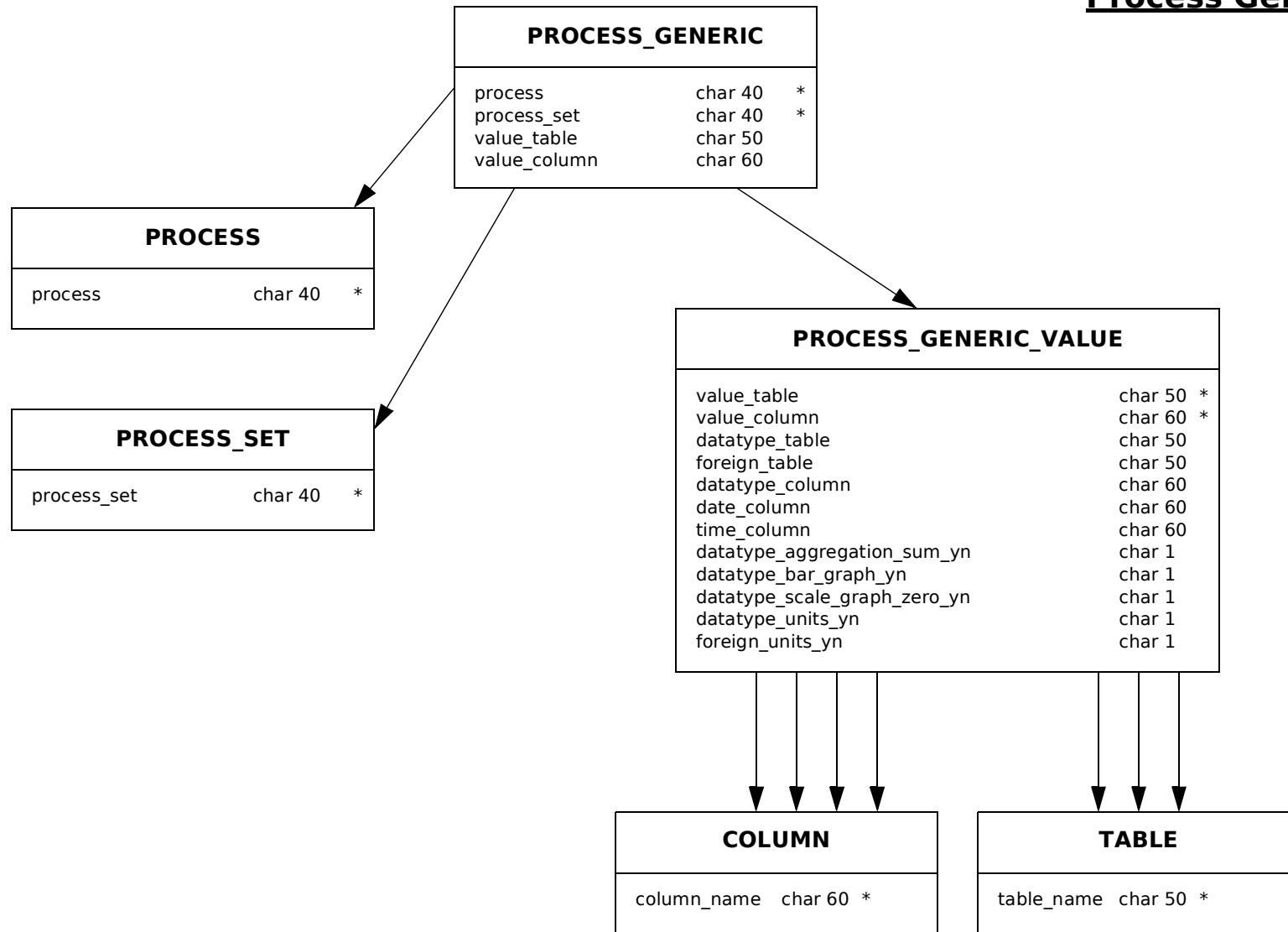
## Process Set Subschema





# APPASERVER Natural Database Schema

## Process Generic Subschema





# APPASERVER Natural Database Schema

## Entity Subschema

